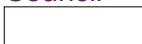


Agenda Item 11 APPENDIX 1

HWB 20141022AR11 App1 Performance Report

October 2014

Strategy & Performance & Public Health Intelligence Team– Croydon
Council



Contents

NOTE – the principal source of data within this report is the Croydon Key dataset developed by the Croydon Public Health Intelligence Team. Thanks to David Osborne (Senior Public Health Analyst) in particular for making this data source available and for his input into the selection of relevant performance measures.

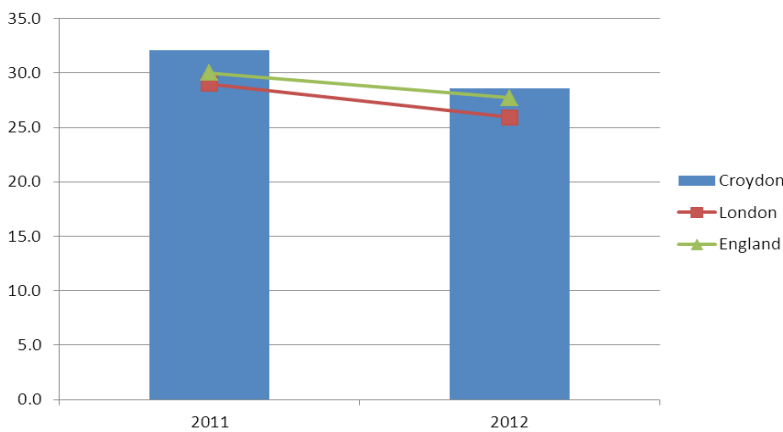
Improvement area 1: giving our children a good start in life

Priorities

- 1.1 Reduce low birth weight
- 1.2 Increase breastfeeding initiation and prevalence
- 1.3 Improve the uptake of childhood immunisations
- 1.4 Reduce overweight and obesity in children
- 1.5 Improve children's emotional and mental wellbeing
- 1.6 Reduce the proportion of children living in poverty
- 1.7 Improve educational attainment in disadvantaged groups

Potential challenge areas

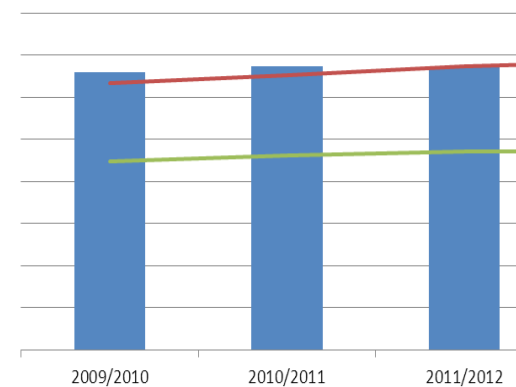
Conception rate per thousand women aged 15 to 17



Croydon has been recognised for achieving a sustained and long-term decline in the rate of teenage conceptions. Falling more in line with the national average, the borough however remained above the London average for 2012

Areas of success

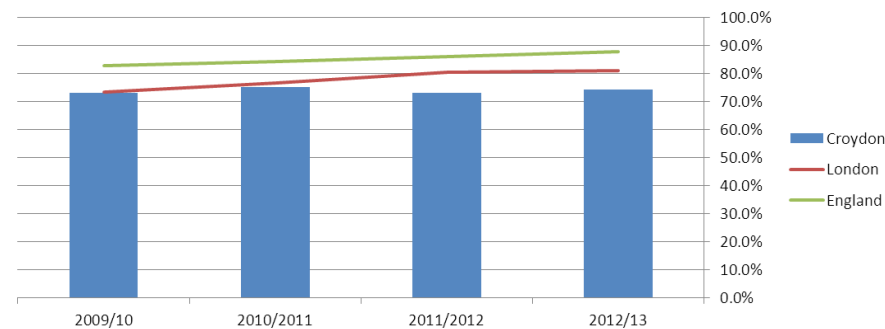
% breastfeeding prevalence at 6-8 weeks



Breastfeeding prevalence at 6-8 weeks has increased, exceeding the national average and remains in line with the London average

Potential challenge areas

MMR vaccination coverage for two doses (5 years old)



MMR vaccination coverage (2 doses for 5 yr-olds) has been stable, remaining below the London and national averages

Health & Wellbeing Board – PERFORMANCE REPORT October 2014

Potential challenge areas	Areas of success
Conception rate per thousand women aged 15 to 17	% breastfeeding prevalence at 6-8
showing a gradually increasing trend nationally and in London, whilst the latest available data (2012-13: 74.2) shows slight increase in comparison with the previous year (2011-12: 73.1) the indicator remains below the London and National average.	

Performance measures

Measure description	Source	Polarity (is a higher or lower number better?)	Most recent annual data	From	Previous year	London Average	England Average	Comparison with previous year
Conception rate per thousand women aged 15 to 17	Croydon key dataset	LOW	28.6	2012	32.10	24.4	26.3	BETTER
Breastfeeding initiation within 48 hours (% of mothers)	Croydon key dataset	HIGH	86%	2012/13	87%	86.8%	73.8%	ABOUT THE SAME
% breastfeeding prevalence at 6-8 week health check (infants totally or partially breastfed as a % of all subject to a health check)	Croydon key dataset	HIGH	67.9%	2012/13	67.3%	68.5%	47.2%	ABOUT THE SAME
Percentage of women who are smokers at the time of delivery	Croydon key dataset	LOW	7.6%	2013/14 (Quarter 2 reporting period)	7.8%	5%	11.8%	ABOUT THE SAME
Percentage of children aged 4-5 years with height and weight recorded who are either overweight or obese	Croydon key dataset	LOW	23.7%	2012/13	24.2%	23%	22.2%	ABOUT THE SAME
Percentage of children aged 10-11 years with height and weight recorded who are either overweight	Croydon key dataset	LOW	38.2%	2012/13	38.3%	37.5%	33.9%	ABOUT THE SAME

Health & Wellbeing Board – PERFORMANCE REPORT October 2014

Measure description	Source	Polarity (is a higher or lower number better?)	Most recent annual data	From	Previous year	London Average	England Average	Comparison with previous year
or obese								
Percentage of live and still births under 2500 grams	Croydon key dataset	LOW	8.3%	2011	8.8%	8%	7.4%	BETTER
Immunisations - DTaP / IPV / Hib vaccination coverage (1 year old)	Croydon key dataset	HIGH	91.1%	2012/13	91.3%	91.1%	94.7%	ABOUT THE SAME
Immunisations - Hib / MenC booster vaccination coverage (2 years old)	Croydon key dataset	HIGH	86.6%	2012/13	82.4%	87.3%	92.7%	BETTER
Immunisations - PCV booster vaccination coverage (2 years old)	Croydon key dataset	HIGH	86.2%	2012/13	82.4%	86.6%	92.5%	BETTER
Immunisations - MMR vaccination coverage for one dose (2 years old)	Croydon key dataset	HIGH	86.5%	2012/13	83.5%	87.1%	92.3%	BETTER
Immunisations - DTaP / IPV vaccination coverage (5 years old)	Croydon key dataset	HIGH	92.7%	2012/13	92.5%	92.8%	95.8%	ABOUT THE SAME
Immunisations - MMR vaccination coverage for two doses (5 years old)	Croydon key dataset	HIGH	74.2%	2012/13	73.1%	80.8%	87.7%	ABOUT THE SAME
Tooth decay in children aged 5 (average number of teeth)	Croydon key dataset	LOW	1.05	2007/08	NA	1.31	1.11	UNKNOWN
Emotional wellbeing of looked-after children (mean score out of 40)	Croydon key dataset	LOW	12.6	2012/13	11.5	13.5	14	ABOUT THE SAME
Children living in poverty	Croydon key dataset	LOW	25.2%	2011	25.7%	26.5%	20.6%	ABOUT THE SAME

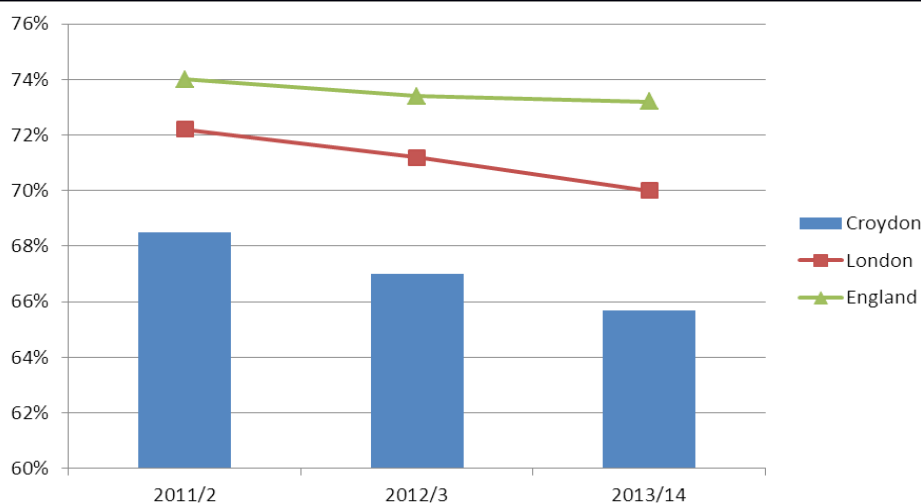
Improvement area 2: preventing illness and injury and helping people recover

Priorities

- 2.1 Reduce smoking prevalence
- 2.2 Reduce overweight and obesity in adults
- 2.3 Reduce the harm caused by alcohol misuse
- 2.4 Early diagnosis and treatment of sexually transmitted infections including HIV infection
- 2.5 Prevent illness and injury and promote recovery in the over 65s

Potential challenge areas

% of persons aged 65 and over immunised against influenza

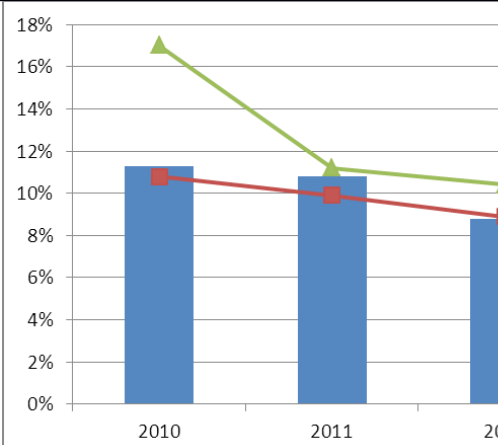


The influenza immunisation rate for this age group in Croydon falls short of the national and London averages, although shows a similar rate of decline to the London average.

Persons presenting with HIV at a late stage of infection (% of new diagnoses of HIV)

Areas of success

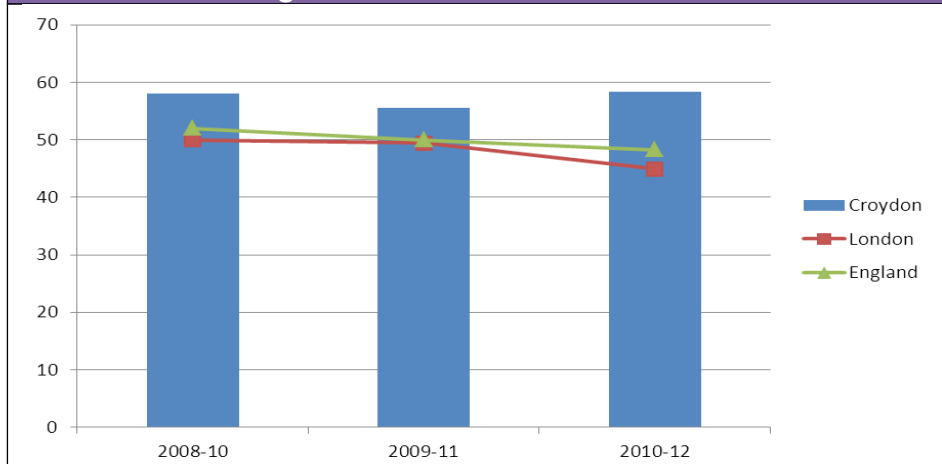
% Fuel poverty



This indicator measures the percentage of people who are fuel poor, meaning they spend more than 10% of their income on fuel to maintain a "satisfactory" temperature (usually 21 degrees for the main living room and 18 degrees for other occupied areas). The latest data shows that this is improving in Croydon and London.

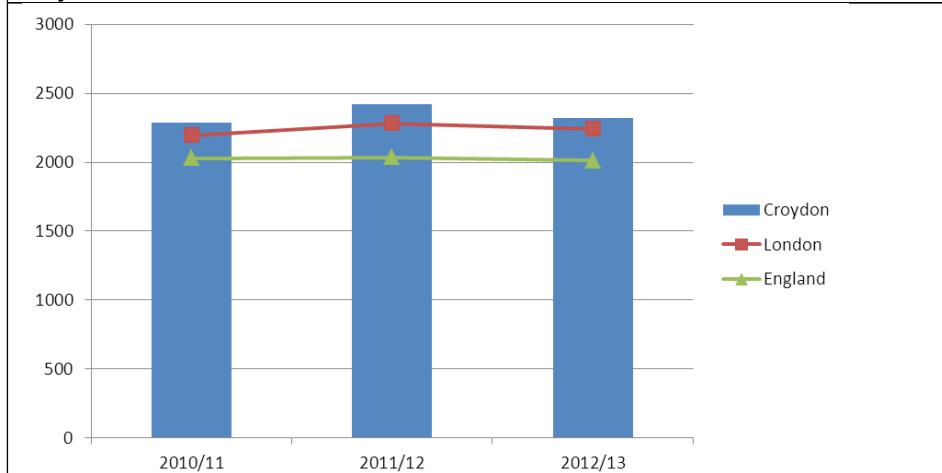
Health & Wellbeing Board – PERFORMANCE REPORT October 2014

Potential challenge areas	Areas of success
---------------------------	------------------



The proportion of late HIV diagnoses has increased, while London and England averages have continued to decline.

Potential challenge areas	Areas of success
---------------------------	------------------



While the rate of injuries fell in Croydon, it still remains above rates for both London and England.

Performance measures

Measure description	Source	Polarity (is a higher or lower number better?)	Most recent annual data	From	Previous year	London Average	England Average	Comparison with previous year
% of persons aged 65 and over immunised against influenza	Croydon key dataset	HIGH	65.7%	2013/14	67%	70%	73.2%	WORSE

Health & Wellbeing Board – PERFORMANCE REPORT October 2014

Measure description	Source	Polarity (is a higher or lower number better?)	Most recent annual data	From	Previous year	London Average	England Average	Comparison with previous year
Self-reported 4-week smoking quitters per 100,000 adult population aged 16+	Croydon key dataset	HIGH	793	2012/13	796	805	868	ABOVE THE SAME
Smoking prevalence (% of adults aged over 18 who responded to survey)	Croydon key dataset	LOW	19.7%	2011/12	19.4%	18.9%	20%	ABOVE THE SAME
Rate of hospital admissions with a primary or secondary diagnosis of obesity per 100,000 population	Public Health Outcomes Framework	LOW	440	2012/13	307	462	551	WORSE
Recorded crime attributable to alcohol: Persons, all ages, crude rate per 1000 population	Croydon key dataset	LOW	9.22	2012/13	9.65	9.02	5.74	ABOVE THE SAME
Percentage of patients on GP registers aged 17 and over diagnosed with diabetes	Croydon key dataset	LOW	6.4%	2012/13	6.1%	5.8%	6%	ABOVE THE SAME
Adults achieving at least 150 minutes of physical activity per week (% of adults aged over 16)	Croydon key dataset	HIGH	13.0%	2012	10.3%	12.8%	14.7%	BETTER
Persons presenting with HIV at a late stage of infection (% of new diagnoses of HIV)	Croydon key dataset	LOW	58.3%	2010/12	55.5	44.9	48.3	WORSE
Chlamydia diagnoses (ages 15-24) (rate per 100,000 population)	Croydon key dataset	n/a	2704	2013	2511	2179	2016	UNKNOWN
Percentage of households identified as "fuel poor"	Croydon key dataset	LOW	8.8%	2012	10.8%	8.9%	10.4%	BETTER
Injuries due to falls (rate per 100,000)	Croydon key	LOW	2318	2012/13	2418	2242	2011	ABOVE THE SAME

Health & Wellbeing Board – PERFORMANCE REPORT October 2014

Measure description	Source	Polarity (is a higher or lower number better?)	Most recent annual data	From	Previous year	London Average	England Average	Comparison with previous year
population aged over 65)	dataset							SAM
Patient reported outcomes for elective procedures: Groin Hernia (EQ-5D- average health gain score out of 1)	NHS outcomes framework	HIGH	Suppressed due to small sample	2011/2012	0.067	0.072	0.084	UNKNOWN
Patient reported outcomes for elective procedures: Hip Replacement (EQ-5D- average health gain score out of 1)	NHS outcomes framework	HIGH	0.373	2012/13	0.381	0.42	0.423	ABOVE THE SAM
Patient reported outcomes for elective procedures: Knee Replacement (EQ-5D- average health gain score out of 1)	NHS outcomes framework	High	0.276	2012/13	0.283	0.28	0.313	ABOVE THE SAM
Patient reported outcomes for elective procedures: Varicose Vein (EQ-5D- average health gain score out of 1)	NHS outcomes framework	High	Suppressed due to small sample	2012/13	Suppressed due to small sample	0.072	0.084	UNKNOWN

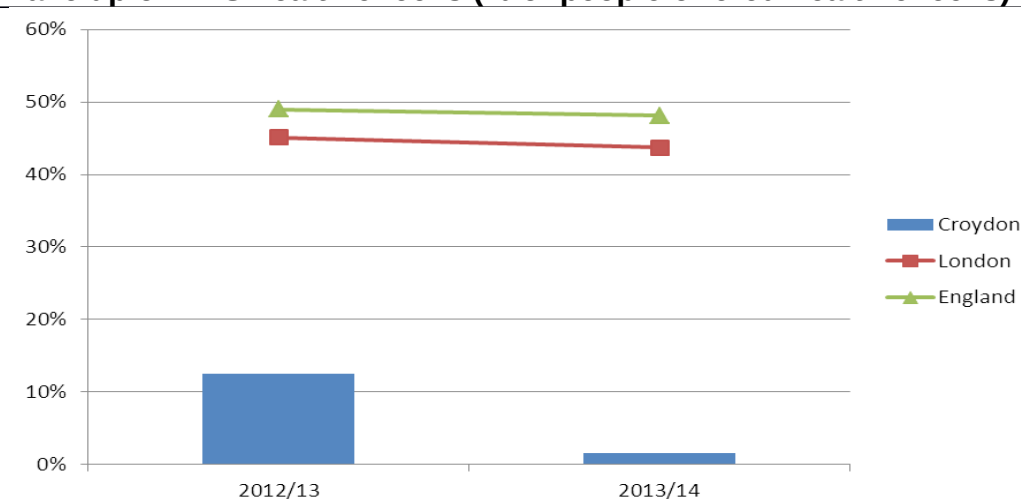
Improvement area 3: preventing premature death and long term health conditions

Priorities

- 3.1 Early detection and management of people at risk for cardiovascular diseases and diabetes
- 3.2 Early detection and treatment of cancers

Potential challenge areas

Take up of NHS health checks (% of people offered health checks)



A recovery plan is in place. Actions taken include amendment of provider contracts to allow for opportunistic NHS Health Checks; invitations to be issued directly by GPs; a community outreach pilot; recruitment of additional GP and pharmacy providers; and redesign and procurement of a new service model.

Performance measures

Measure description	Source	Polarity (is a higher or lower number better?)	Most recent annual data	From	Previous year	London Average	England Average	Comparison with previous year
Infant mortality - Rate per 1,000 live births,	Croydon key dataset	LOW	3.9	2010/12	4.4	4.1	4.1	BETTER
Life expectancy at age 75 (males) in	Croydon key	HIGH	11.5	2010-12	11.6	12	11.3	ABOUT THE SAME

Health & Wellbeing Board – PERFORMANCE REPORT October 2014

Measure description	Source	Polarity (is a higher or lower number better?)	Most recent annual data	From	Previous year	London Average	England Average	Comparison with previous year
years	dataset							
Life expectancy at age 75 (females) in years	Croydon key dataset	HIGH	13.3	2010-12	13.1	13.9	13.	ABOUT THE SAME
Early deaths from cancer considered preventable (rate per 100,000 population aged under 75)	Croydon key dataset	LOW	79.6	2010-12	74.3	81.5	84.9	WORSE
Deaths from causes considered preventable (rate per 100,000 population)	Croydon key dataset	LOW	179	2010-12	171	178.2	187.8	WORSE
Early deaths from cardiovascular diseases considered preventable (rate per 100,000 population age<75)	Croydon key dataset	LOW	55.2	2010-12	56	52	53.5	ABOUT THE SAME
Early deaths from liver disease considered preventable (rate per 100,000 population age<75)	Croydon key dataset	LOW	14	2010-12	14.9	16.6	15.8	ABOUT THE SAME
Early deaths from respiratory diseases considered preventable (rate per 100,000 population age<75)	Croydon key dataset	LOW	17.9	2010-12	15.4	17.1	17.6	WORSE
Offered an NHS health check (% of eligible people aged 40-74)	Croydon key dataset	HIGH	0.8% ¹	2013/14	0.1%	5.3%	23.1%	WORSE
Take up of NHS health checks (% of people offered health checks)	Croydon key dataset	HIGH	1.6	2013/14	12.5	43%	48%	WORSE

¹ A Data quality issue has been cited on Public Health Outcomes Framework

Health & Wellbeing Board – PERFORMANCE REPORT October 2014

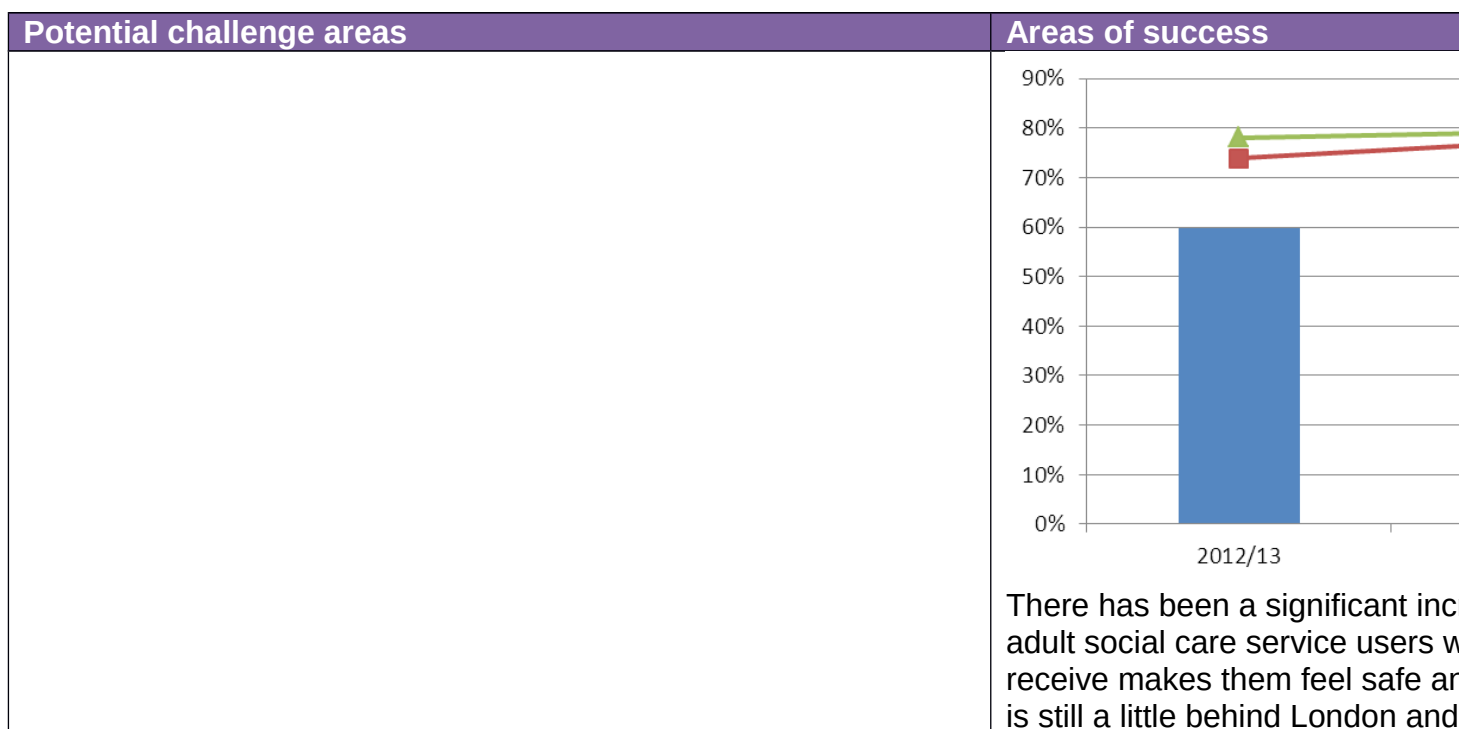
Measure description	Source	Polarity (is a higher or lower number better?)	Most recent annual data	From	Previous year	London Average	England Average	Comparison with previous year
% of NHS health checks that identify patients to be at high risk	TBC	TBC	12.3	2012/13	10.2	Local indicator	local indicator	UNKNOWN
Breast screening rate (% of women aged 53-70)	Croydon key dataset	HIGH	69.2	2013	70.8	68.6	76.3	ABOUT THE SAME
Cervical screening rate (% of eligible women aged 25-64)	Croydon key dataset	HIGH	71.7	2013	73.8	68.6	73.9	ABOUT THE SAME
Deaths from diabetes (rate per 100,000 population)	Croydon key dataset	LOW	5.64	2010-12	5.68	5.06	5.05	ABOUT THE SAME

Improvement area 4: supporting people to be resilient and independent

Priorities
4.1 Rehabilitation and reablement to prevent repeat admissions to hospital 4.2 Integrated care and support for people with long term conditions 4.3 Support and advice for carers 4.4 Reduce the number of households living in temporary accommodation 4.5 Reduce the number of people receiving job seekers allowance

Potential challenge areas	Areas of success																				
<p>Proportion of people using social care who receive direct payments</p> <table border="1"> <caption>Proportion of people using social care who receive direct payments</caption> <thead> <tr> <th>Year</th> <th>Croydon (%)</th> <th>London (%)</th> <th>England (%)</th> </tr> </thead> <tbody> <tr> <td>2012/13</td> <td>~9.5</td> <td>~19.5</td> <td>~16.5</td> </tr> <tr> <td>2013/14</td> <td>~11.5</td> <td>~22.5</td> <td>~19.0</td> </tr> </tbody> </table> <p>Although increasing, the proportion of social care clients in receipt of direct payments appears to lag significantly behind London and national averages.</p>	Year	Croydon (%)	London (%)	England (%)	2012/13	~9.5	~19.5	~16.5	2013/14	~11.5	~22.5	~19.0	<p>Proportion of people using social care who receive directed support</p> <table border="1"> <caption>Proportion of people using social care who receive directed support (2012/13)</caption> <thead> <tr> <th>Entity</th> <th>Proportion (%)</th> </tr> </thead> <tbody> <tr> <td>Croydon</td> <td>~73</td> </tr> <tr> <td>London</td> <td>~63</td> </tr> <tr> <td>England</td> <td>~55</td> </tr> </tbody> </table> <p>The proportion of people using social care who receive directed support in Croydon has seen strong growth compared to National averages. Croydon's figure is the best in London.</p>	Entity	Proportion (%)	Croydon	~73	London	~63	England	~55
Year	Croydon (%)	London (%)	England (%)																		
2012/13	~9.5	~19.5	~16.5																		
2013/14	~11.5	~22.5	~19.0																		
Entity	Proportion (%)																				
Croydon	~73																				
London	~63																				
England	~55																				
	<p>Proportion of people who use social care services who have made the most of those services</p>																				

Health & Wellbeing Board – PERFORMANCE REPORT October 2014



Performance measures

Measure description	Source	Polarity (is a higher or lower number better?)	Most recent annual data	From	Previous year	London Average	England Average	Comparison with previous year
Survey Social care-related quality of life	ASCOF	HIGH	18.7	2013/14	18.2	18.5	19	BETTER
Proportion of people who use services who have control over their daily life	ASCOF	HIGH	74.9%	2013/14	72.3%	72%	76.7%	BETTER
Proportion of people using social care who receive self-directed support	ASCOF	HIGH	77.3%	2013/14	73.8%	67.5%	62.1%	BETTER
Proportion of people using social care who receive direct payments	ASCOF	HIGH	11.5%	2013/14	9.6%	22.1%	19.1%	BETTER
Survey: Carer-reported quality of life	ASCOF	HIGH	7.7	2012/13		7.7	8.1	UNKNOWN
Proportion of adults with learning disabilities in paid	ASCOF	HIGH	5.6%	2013/14	5%	9.2%	6.8%	BETTER

Health & Wellbeing Board – PERFORMANCE REPORT October 2014

Measure description	Source	Polarity (is a higher or lower number better?)	Most recent annual data	From	Previou s year	Londo n Averag e	Englan d Averag e	Compl n with previo year
employment								
Proportion of adults in contact with secondary mental health services in paid employment	ASCOF	HIGH	5.8%	2013/14	8.0%	5.5%	7.1%	WORS
Proportion of adults with learning disabilities who live in their own home or with their family	ASCOF	HIGH	66.2%	2013/14	63.8%	68.5%	74.8%	BETTER
Proportion of adults in contact with secondary mental health services living independently, with or without support	ASCOF	HIGH	71.2%	2013/14	78.2%	78.7%	60.9%	WORS
Permanent admissions of younger adults (aged 18 to 64) to residential and nursing care homes, per 100,000 population	ASCOF	LOW	7.8	2013/14	6	10	14.4	WORS
Permanent admissions of older people (aged 65 and over) to residential and nursing care homes, per 100,000 population	ASCOF	LOW	432	2013/14	212	463.9	668.4	WORS
Proportion of older people (65 and over) who were still at home 91 days after discharge from hospital into reablement/ rehabilitation services	ASCOF	HIGH	85.2%	2013/14	85.1%	87.8%	81.9%	ABOUT THE SAME
Delayed transfers of care from hospital per	ASCOF	LOW	5.2	2013/14	3.4	6.9	9.7	WORS

Health & Wellbeing Board – PERFORMANCE REPORT October 2014

Measure description	Source	Polarity (is a higher or lower number better?)	Most recent annual data	From	Previous year	London Average	England Average	Comparison with previous year
100,000 population								
Delayed transfers of care from hospital which are attributable to adult social care per 100,000 population	ASCOF	LOW	3.5	2013/14	2.7	2.3	3.1	WORSER
Overall satisfaction of people who use services with their care and support	ASCOF	HIGH	57.9%	2013/14	54.2%	60.1%	64.9%	BETTER
Overall satisfaction of carers with social services	ASCOF	HIGH	29.2%	2012/13	Not available	35.2%	42.7%	UNKNOWN
Proportion of carers who report that they have been included or consulted in discussion about the person they care for	ASCOF	HIGH	63.4%	2013/14	Not available	65.9%	72.8%	UNKNOWN
Proportion of people who use services and carers who find it easy to find information about services	ASCOF	HIGH	73.1%	2013/14	73.0%	72.6%	74.7%	ABOUT THE SAME
Proportion of people who use services who say that those services have made them feel safe and secure	ASCOF	HIGH	71%	2013/14	59.7%	77.4%	79.2%	BETTER

Improvement area 5: providing integrated, safe, high quality services

Priorities

- 5.1 Redesign of mental health pathways
- 5.2 Increased proportion of planned care delivered in community settings
- 5.3 Redesign of urgent care pathways
- 5.4 Improve the clinical quality and safety of health services
- 5.5 Improve early detection, treatment and quality of care for people with dementia

No focus areas recommended at this point

Measure description	Source	Polarity (is a higher or lower number better?)	Most recent annual data	From	Previous year	London Average	England Average
All cause emergency hospital admissions (rate per 1,000 population)	Croydon key dataset	LOW	9708.2	2011/12	9295.5	7978.2	8853.9
Emergency readmissions within 30 days of discharge from hospital (%)	Croydon key dataset	LOW	12.6%	2011/12	12.0%	12.0%	11.8%
Proportion of deaths from all causes that occur at usual place of residence	Croydon key dataset	NA	39.8	2012	38.1	35.8	43.7
Safety incidents involving severe harm or death per 100 admissions	NHS outcomes framework	LOW	49	Oct 13-Mar 14	63	Not available	Medium Acute(Croydon's comparator group): 20
Patient safety incidents reported rate per 100 admissions	NHS outcomes framework	LOW	5.9	Oct 13-Mar 14	6.6	Not available	Medium Acute(Croydon's comparator group):8
Incidence of	NHS	LOW	3	2013/1	1	Not	5

Health & Wellbeing Board – PERFORMANCE REPORT October 2014

Measure description	Source	Polarity (is a higher or lower number better?)	Most recent annual data	From	Previous year	London Average	England Average
avoidable harm: MRSA (crude count)	outcomes framework			4		available	
Incidence of avoidable harm: C.difficile (crude count)	NHS outcomes framework	LOW	14	2013/14	30	Not available	5.2

Improvement area 6: improving people’s experience of care

Priorities
6.1 Improve end of life care
6.2 Improve patient and service user satisfaction with health and social care services

No focus areas recommended at this point

Measure description	Source	Polarity (is a higher or lower number better?)	Most recent annual data	From	Previous year	London Average	England Average	Comparison with previous year
Patient experience of primary care: GP Services	NHS outcomes framework	HIGH	83.3%	2014	84%	81.4%	85.7%	ABOUT THE SAME
Patient experience of primary care: Out of Hours Services	NHS outcomes framework	HIGH	56.2%	2013	61.8%	58.3%	66.2%	WORSE
Patient experience of primary care: Dentistry	NHS outcomes framework	HIGH	82.9%	2014	81.9%	Not available	84.2%	ABOUT THE SAME
Patient experience of hospital care: Inpatient Overall Experience	NHS outcomes framework	HIGH	68	2012-13	67.7	Not available	76	ABOUT THE SAME
Patient experience of hospital care: Outpatient Overall Experience (out of 100)	NHS outcomes framework	HIGH	74.4	2011	75.3	Not available	80	ABOUT THE SAME
Patient experience of hospital care: Inpatient Responsiveness to Needs (out of 100)	NHS outcomes framework	HIGH	54.4	2014	57.4	Not available	68.7	ABOUT THE SAME
Patient experience of hospital care: A&E Overall Experience	NHS outcomes framework	HIGH	75.5	2012	72.3	Not available	80	BETTER
Access to NHS dental services (out of 100)	NHS outcomes framework	HIGH	94.6	2014	95.5	93.1	94.8	ABOUT THE SAME

Health & Wellbeing Board – PERFORMANCE REPORT October 2014

Measure description	Source	Polarity (is a higher or lower number better?)	Most recent annual data	From	Previous year	London Average	England Average	Comparison with previous year
Access to GP services	NHS outcomes framework	HIGH	73.4%	2014	74.8%	70.7%	74.6%	UNKNOWN
Women's experience of maternity services: Intrapartum ² (score between 1 -100)	NHS outcomes framework	High	70.5	2013	73.0	Not available	74.5	WORSE
Patient experience of community mental health services ³ (score between 1-10)	NHS outcomes framework	HIGH	7	2014	8.75	Not available	6.6	WORSE

² Reliable data not available for pre and post natal components of this indicator. The indicator definition includes 6 questions across an antenatal survey (which Croydon did not submit), a Intrapartum survey- shown here and a Postnatal survey for which only one of the two questions is available in the Croydon report. As a result only the two questions c13 and c17 average from the Intrapartum results have been shown here.

³ Data is only available at SLAM (South London and Maudsley) level.